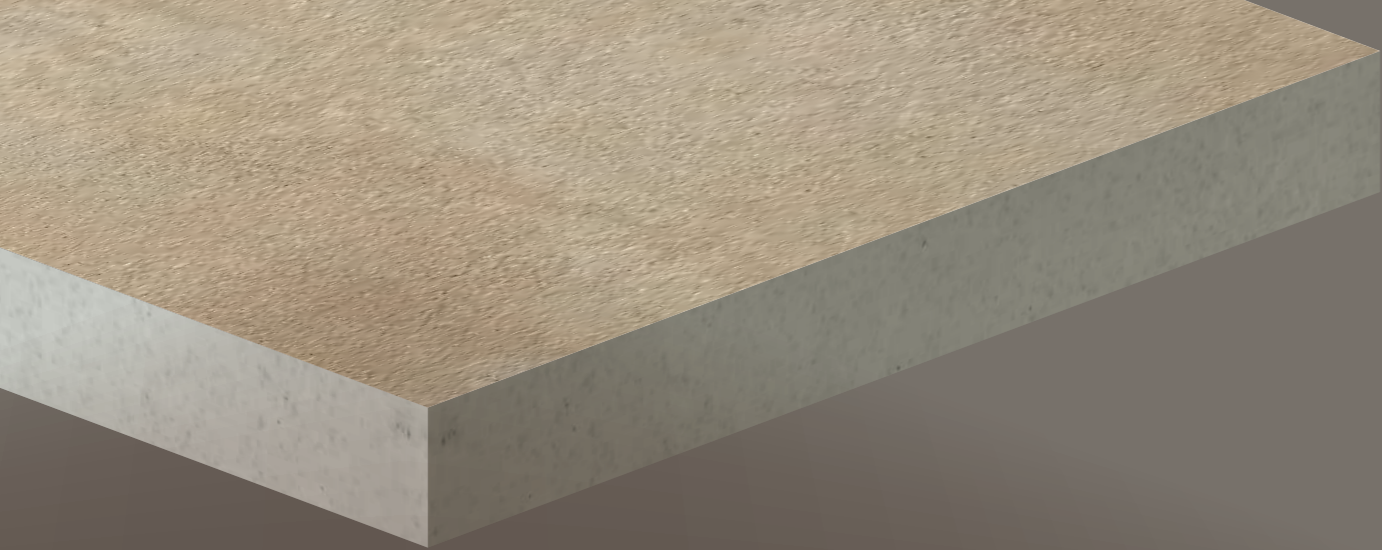


[www.stratastone.ca](http://www.stratastone.ca)

**STRATA**  
**2CM**

OUTDOOR  
PORCELAIN TILE



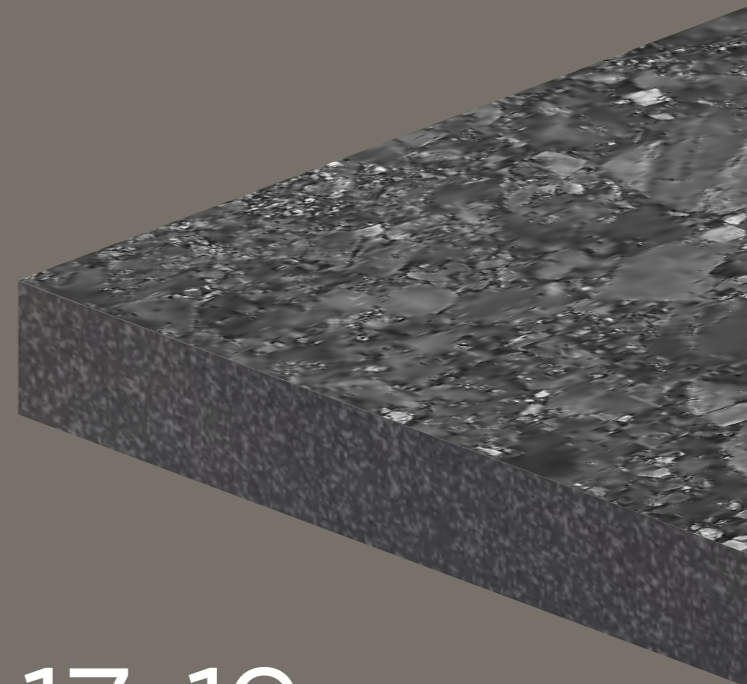


01~02

ABOUT THE BRAND

05~16

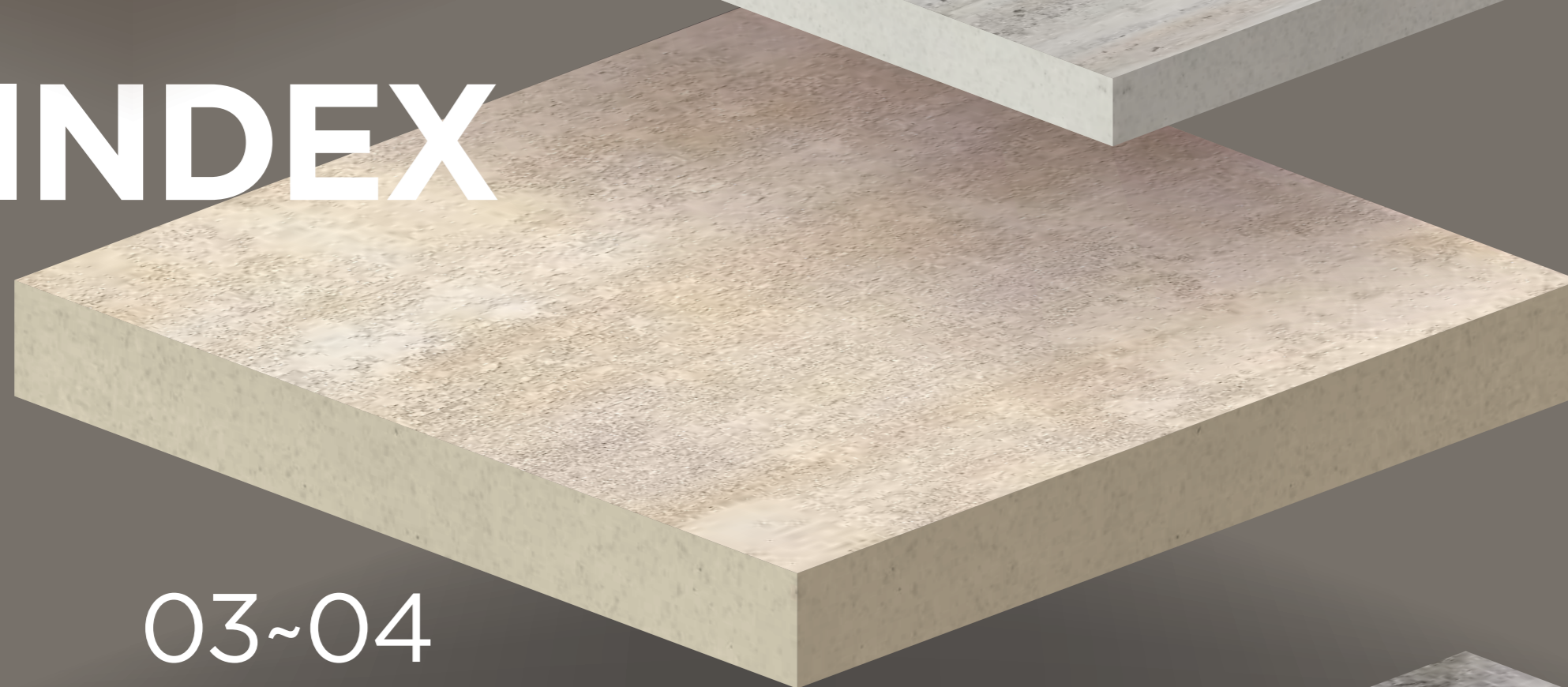
9 APPLICATIONS



17~19

COLLECTIONS

# INDEX



2CM

20

ACCESSORIES

03~04

PRODUCT DETAILS

21~22

PARAMETERS





WHY STRATA  
**BEYOND  
 YOUR  
 IMAGINATION**

**LEADING GLAZED  
 TILE MANUFACTURER**

We are a specialized porcelain tile manufacturer with 15 years of experience in producing top-grade glazed porcelain tiles. Our annual output is more than 20 million square meters

**POWERFUL R&D TEAM SUPPORT**

More than 300 engineers and experts including Italian designers have worked towards building a quality and price that cannot be beaten

**RICH PRODUCT RANGE**

Size: from 148x398mm (6"x16") to 1600x3200mm (64"x128")  
 Thickness: 9.2mm to 20mm  
 Surface: full polished, honed, matte, satin and rough finish  
 Techniques: screen printing, rotogravure printing, ink-jet printing

**TQC SYSTEM**

In accordance with EN14411:2016 standard.



2018 500 Most Valuable Brands



Three Star Certification Of Green Building Materials



In Accordance With EN14411:2016 Standard



A recognized world leader in testing inspection and certification services (TIC)



SGS is recognized as the global benchmark for quality and integrity

# WHAT MAKES US DIFFERENT?

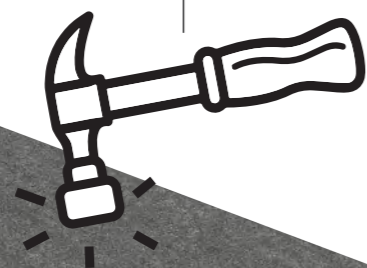
## Anti-slip R11 Rating

Our 2cm outdoor porcelain tile has an R11 slip rating. This provides great traction in slippery conditions.



## High Breaking Strength

When properly installed, our tiles can withstand up to 10,200N of pressure before breaking. This is the equivalent of over 2200lbs per tile.



2CM



## Advanced Technology

New high pressure and temperature technology has allowed us to create a product that is the most realistic and durable to ever exist for outdoor flooring applications.

## Natural Stone Texture

Advancements in technology have allowed us to create a product that look likes natural stone is over two times stronger



# Popular Applications

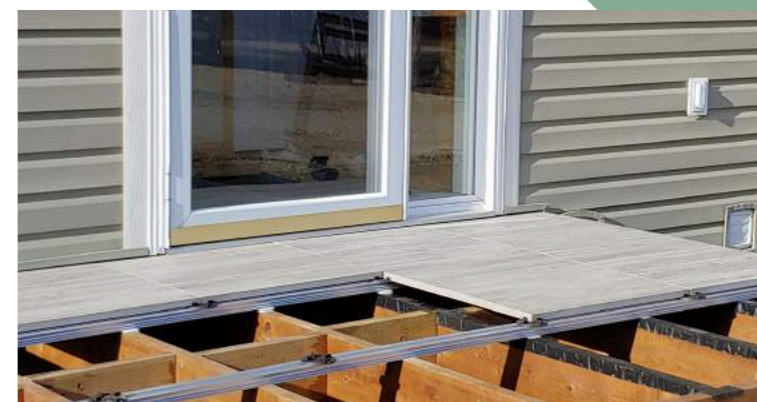
## 1. Ground Level Patios, Walkways and Stepping Stones



## 2. Rooftops and Balconies



## 3. Raised Decks



## Ground Level Patios and Walkways



### Installation

- For any ground level purpose, you can use our outdoor porcelain tile. Ground level applications include: patios, walkways & stepping stones.
- Base preparation is the same as other concrete slabs and paving stones.
  - 4" compacted aggregate base + 1" levelling layer OR an interlocking sub-base tile.
  - Interlocking sub-base tiles such as "Gator Base" replaces 4" of compacted aggregate. These tiles help stabilize the base and are especially useful in climates where freezing and thawing often occur.

## Ground Level Installation Cont'd

- Using ground level spacers in between the tiles ensures uniformity throughout the area. There are multiple spacing options available from local dealers.
- A low profile edge restraint is installed along the perimeter to hold the patio or walkway in place. This edge restraint is spiked down. The edge restraint should be less than the thickness of the tile (2cm).
- To prevent water from penetrating into the base or weeds growing through, a grout or hardening agent called "polymeric sand" is swept into the joints. The sand reacts with water to harden which then seals the joints in between the tiles.



# Stratastone 2cm Porcelain Tile vs. Concrete Pavers and Slabs

- **Weight**

- Stratastone 2cm Porcelain Tiles weigh 9.5lbs/sqft.. This means the most popular size (60x60cm) weighs 17 kg or 37 lbs. Concrete slabs of the same size - commonly referred to as sidewalk blocks - weigh 45 kg's or 100lbs which is over 2.5 times the weight.

- **Strength and Hardness**

- Each tile can withstand 10,200N of pressure, the equivalent of 2200lbs. Concrete slabs and pavers of the same thickness would crumble under weights even close to this.
- Porcelain tile is much harder than concrete. Concrete slabs and pavers are generally thought of as "soft" and can scratch easily. Very few materials can scratch the Stratastone 2cm Porcelain tile other than diamond and other porcelain products.

- **Aesthetics**

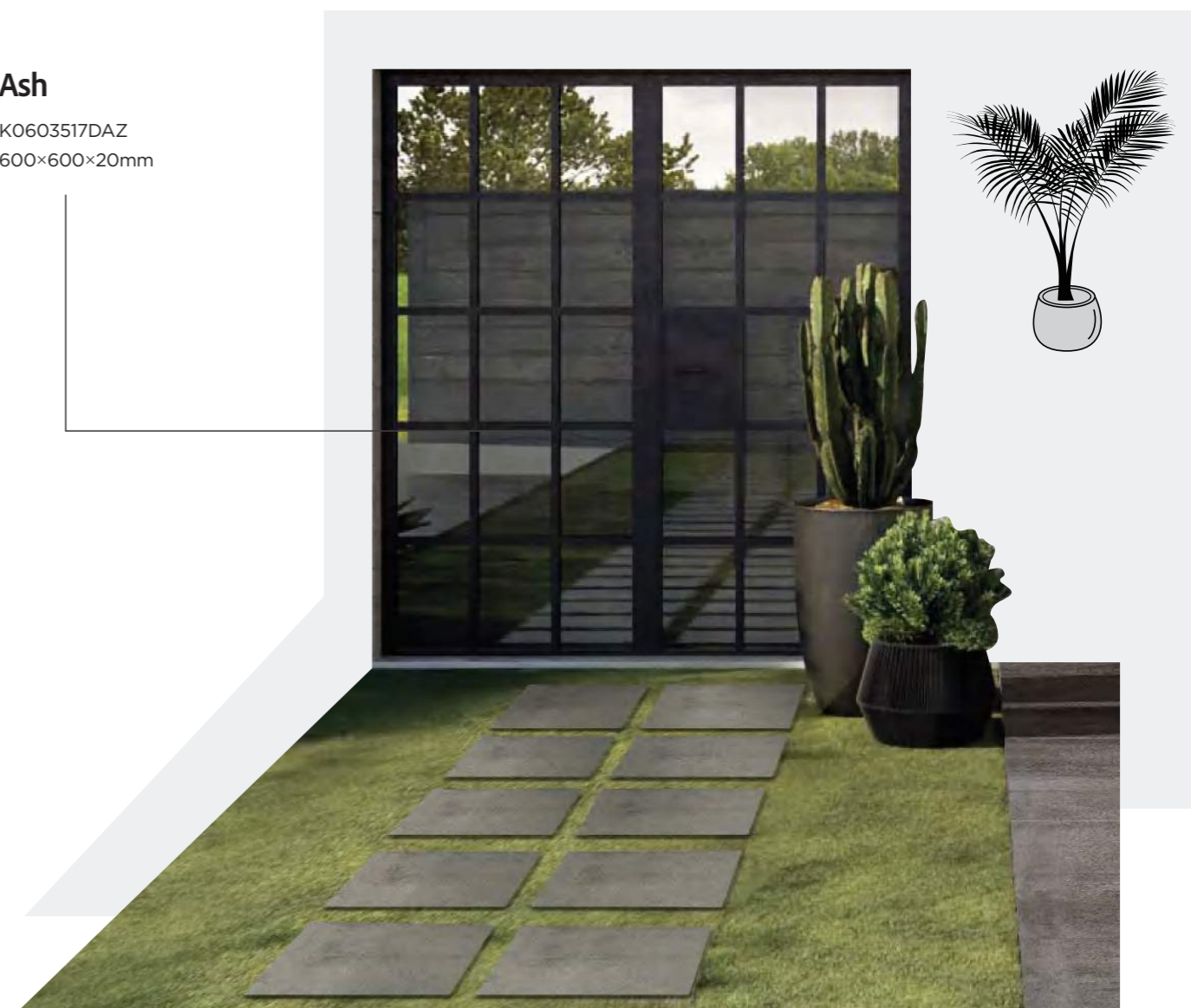
- Because concrete is ever curing and soft, it gets worn down over time. Concrete pavers and slabs will always crack, fade and ultimately break down. Our porcelain tile will change very little over time.
- There are always variances in colour, size and texture of concrete pavers and slabs due to the way they are manufactured and the raw materials used. Porcelain tiles are produced in a very different way that ensures much better consistency in all facets. In essence, Stratastone porcelain tiles are a much more "perfect" product than concrete pavers and slabs.

- **Porosity**

- Typical concrete pavers and slabs have up to 15% porosity and sometimes more. This means liquids like oils or red wine can easily penetrate and stain concrete pavers and slabs.
- Stratastone 2cm Porcelain Tile is virtually impenetrable with less than 0.5% porosity.

## Ash

K0603517DAZ  
600×600×20mm



## More Advantages and Uses



- Because of the lightweight and near zero porosity of our tile, simple vacuum clamps can be used by one person to install even the large format tiles (120x60cm). Labour and equipment costs are greatly reduced because of this.
- Nothing is impervious to outdoor elements nature throws at us, but we challenge you to find a product affected less than the Stratastone Porcelain Tile!

## More Advantages and Uses

- There is no better product to use for around a pool or hot tub than our tile. The anti-slip surface is ideal for areas where water is present.
- Our bullnose tiles create a safe transition for around the perimeter of pool decks and steps.

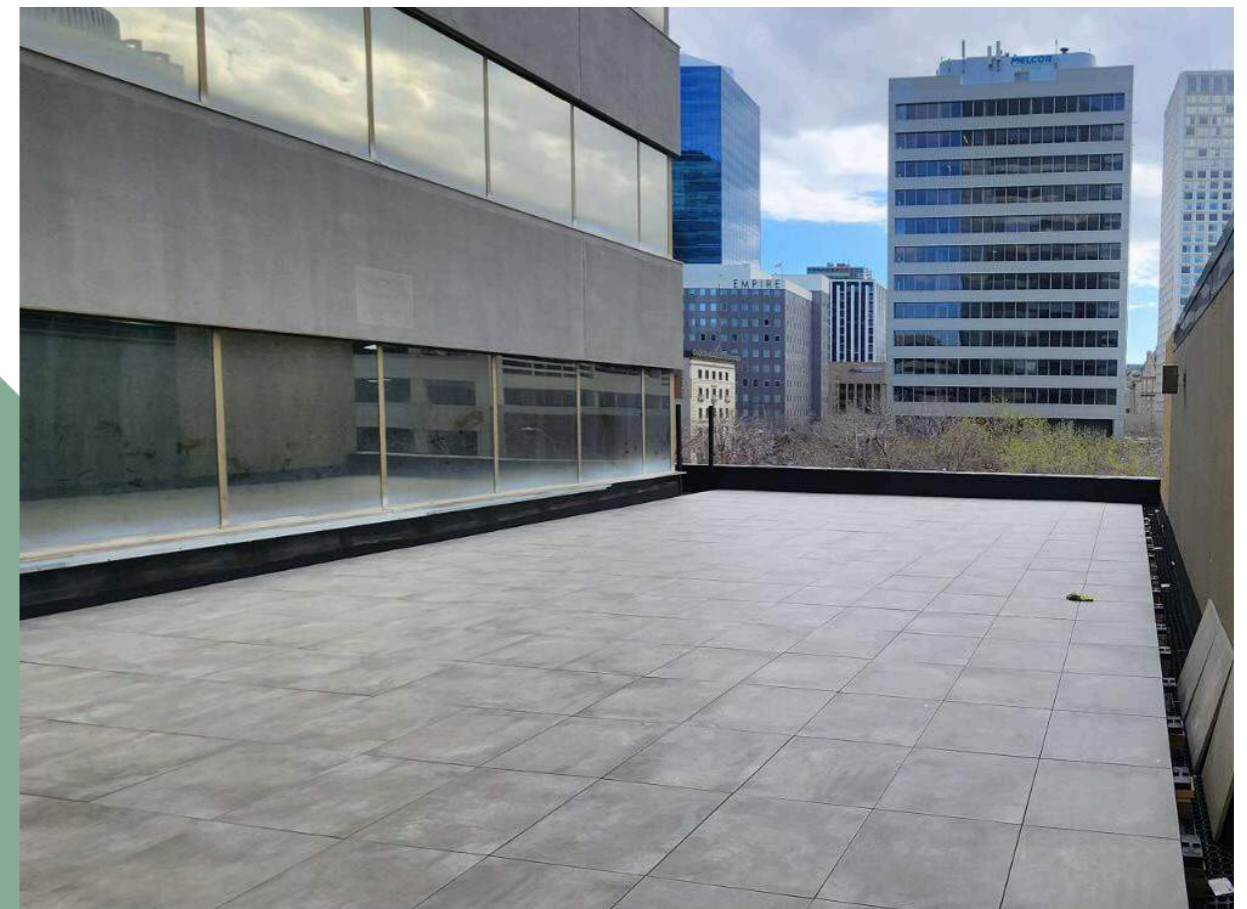


# Rooftops & Balconies



- Being lightweight and strong, Stratastone 2cm Porcelain Tiles are one of the most commonly used flooring products for residential and commercial rooftops and balconies.
- Alternative rooftop products are almost always heavier, less durable and less aesthetically pleasing than our 2cm tiles.
- Because less weight is required to be supported, significant time and materials are saved in framing and sub-floor construction.
- By using adjustable pedestals, you can both level and raise or lower the tiles to match doorways, stairs, railings or whatever other constraints you have on your balcony or rooftop.

- Because our tiles are so strong, they only need to be supported on the 4 corners by pedestals or spacers. 60x120cm tiles require an additional spacer at the midway point along the 120cm edge.
- For drainage, water flows in between the tiles to the solid sub surface that the pedestals/spacers sit on. The solid sub surface slopes to a scupper or exit point connecting to existing roof drainage systems that takes the water away from the building





## 3. Raised Decks



### Raised Deck System

- Our aluminum rail system is simple and functional. Only a standard deck frame (16" centres) is required for support. By using standard deck screws, the custom rail is secured to the wooden joists. Joist tape is recommended to protect joists over time.
- Customized plastic spacers slide into the channel of the rail to support 4 corners of the Stratastone Porcelain Tiles.
- Tiles then simply sit on top of the spacers creating a floating system. Tiles can then be pulled up anytime with ease if access is required underneath the deck.
- By installing a fascia board along the edges of the deck, the tiles are secured from moving.

## Aluminum Rail System Cont'd

- Our custom bullnose tiles make installing steps a breeze.
- Market research shows Costs of the aluminum rail system including the Stratastone Porcelain Tiles are less than mid-grade composite decking.
- Pressure treated or cedar decks last 10 - 15 years on average and deteriorate every year until then.
- Even the highest end composite decking warps, fades and ultimately degrades over time.
- Say goodbye to yearly maintenance of wood & composite decks. Our porcelain deck system is virtually maintenance free.
- Contact your local dealer for railing systems.



# Aluminum Deck Railing



- We have both surface and fascia mounted rail systems
  - Fascia or side mounted rail systems are ideal for Stratastone Porcelain decks as you do not need to drill through the tile for securement.

- Contact your local dealer for availability.



# COLLECTIONS

Ash / Striate available size: 1200×600×10mm 600×600×10mm

## Ash

600×600×20mm



K0603516DAZ  
⌞ 10

K0603517DAZ  
⌞ 10

K0603518DAZ  
⌞ 10

K0603525DAZ  
⌞ 10

600×1200×20mm



K0603516DAZ  
⌞ 10

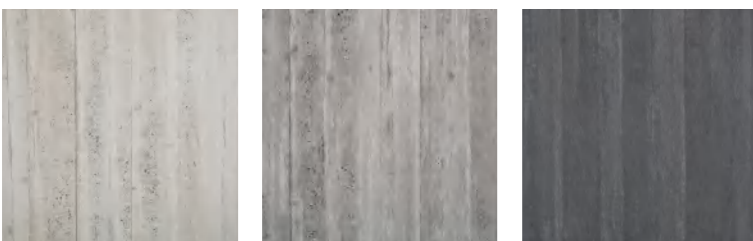
K0603517DAZ  
⌞ 10

K0603518DAZ  
⌞ 10

K0603525DAZ  
⌞ 10

## Striate

600×600×20mm



K0603520DAZ  
⌞ 12

K0603522DAZ  
⌞ 12

K0603523DAZ  
⌞ 12

## Striate

300×600×20mm

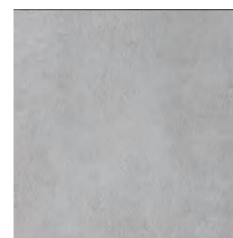


K0603520DAZ  
⌞ 12

K0603522DAZ  
⌞ 12

## Ash

300×600×20mm



K0603516DAZ  
⌞ 10

## Bullnose

300×600×20mm



K0603516DAZ  
⌞ 10

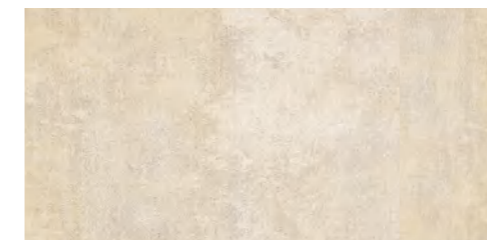
K0603517DAZ  
⌞ 10

K0603518DAZ  
⌞ 10

K0603704DAZ  
⌞ 3

## Arkos

600×1200×20mm



K0126704ZAO

600×600×20mm

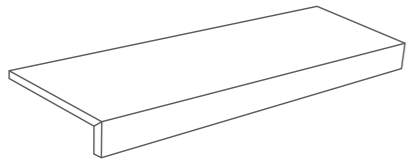


K0603704DAZ  
⌞ 3

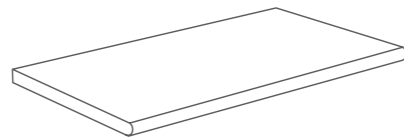
K0606419DAZ  
⌞ 7

# ACCESSORIES

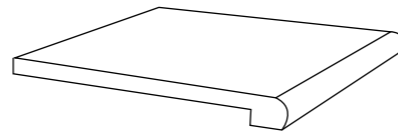
Drop Face



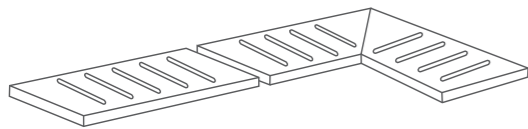
Bullnose



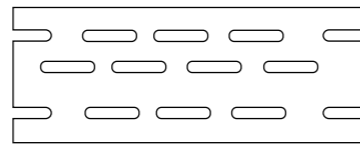
Bullnose  
Build up 20mm



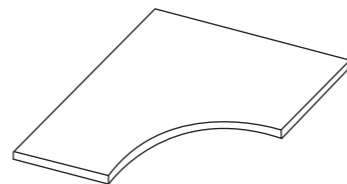
Sink Tile A



Sink Tile B

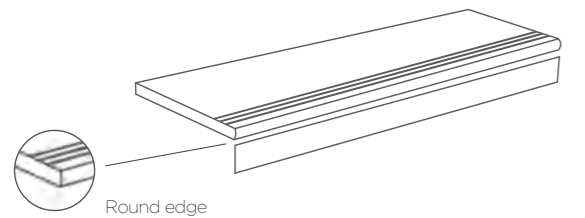


Swimming pool deck tile

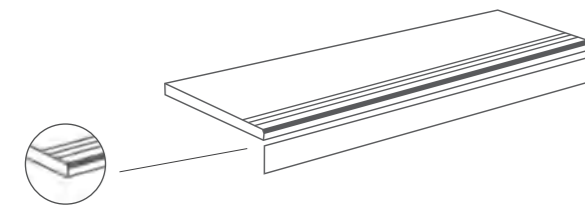


Steps

Stairs tiles are available:  
Round edge step + riser / 45° chamfering step + riser

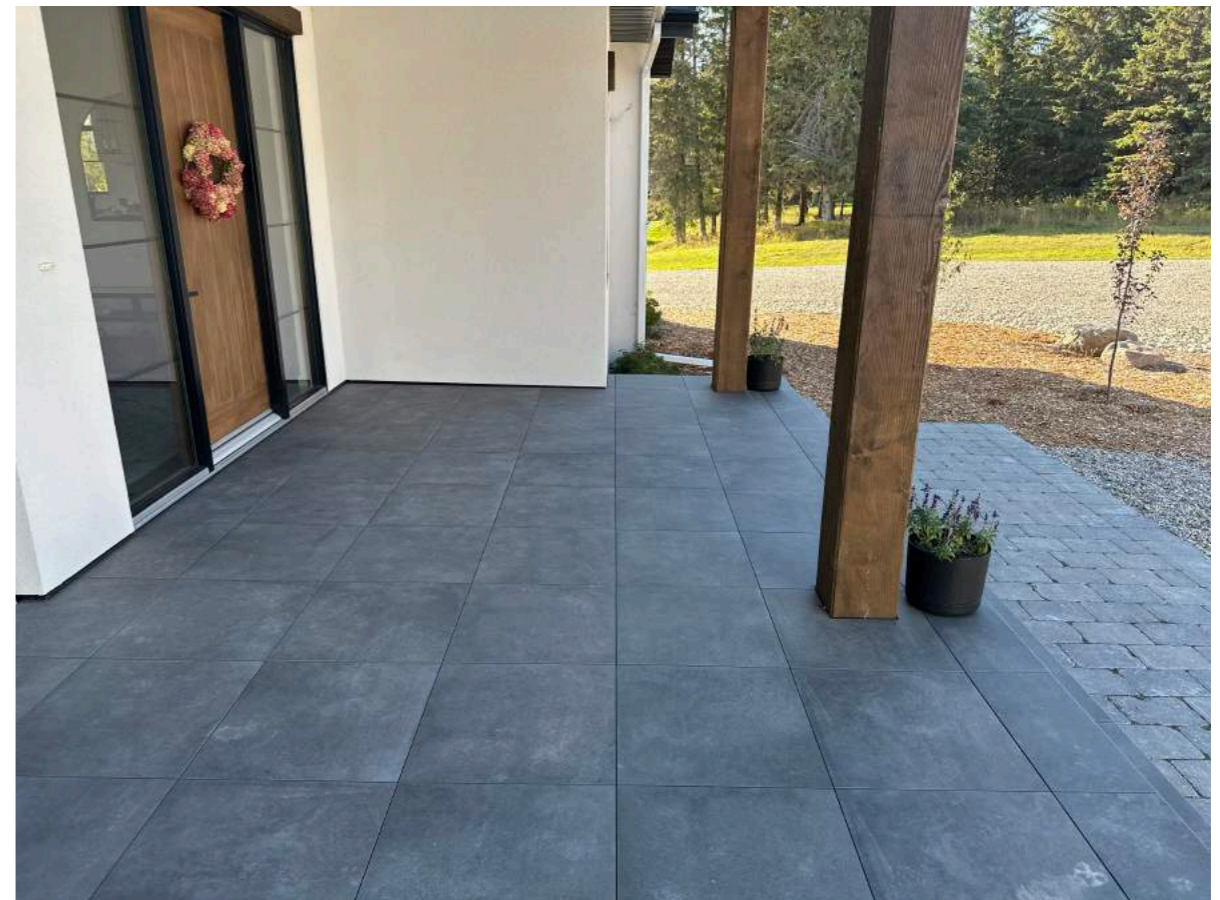
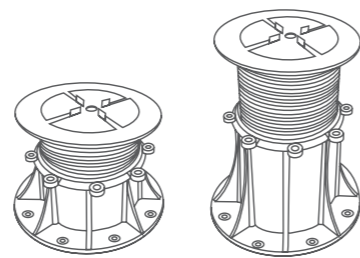


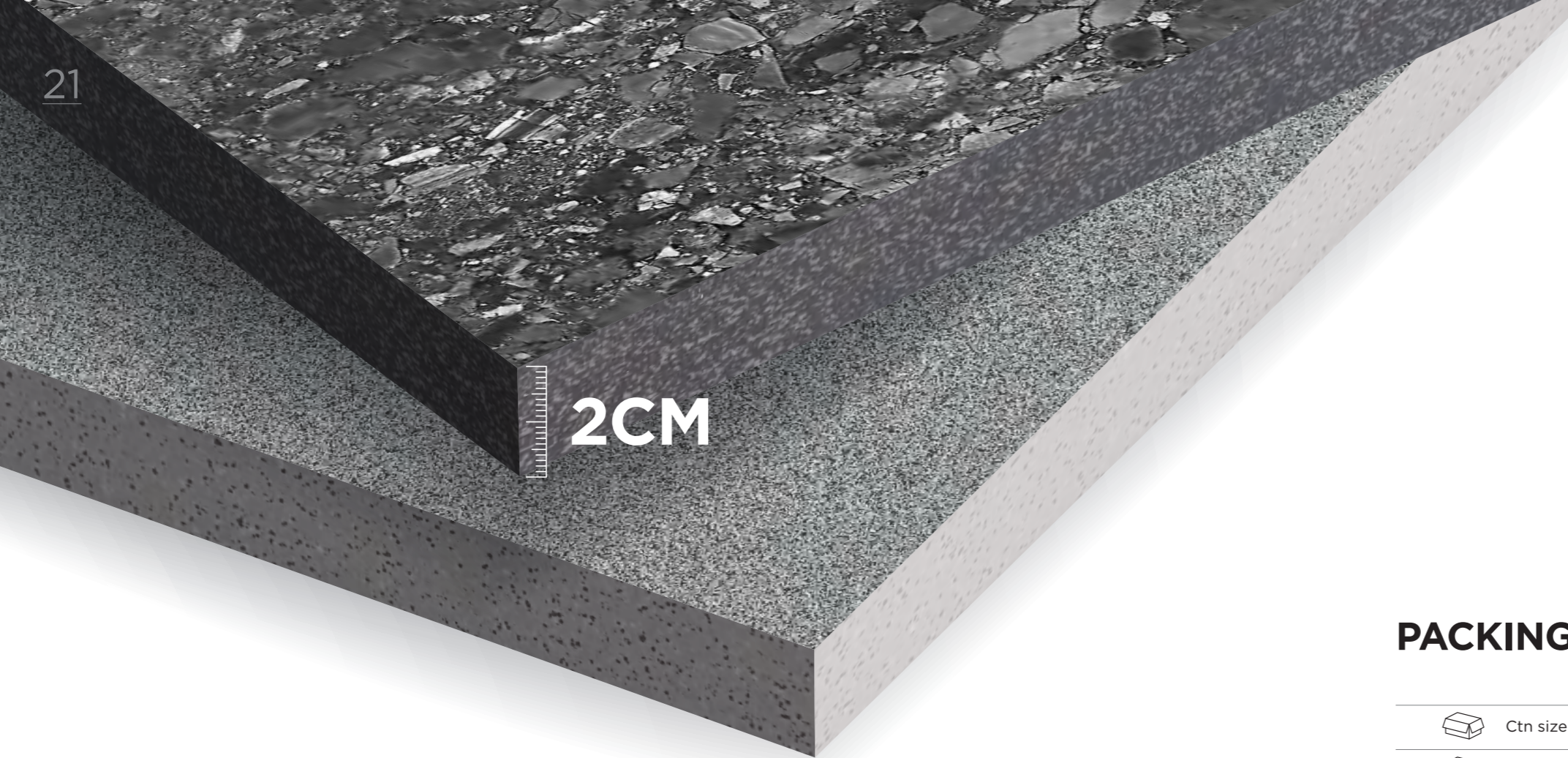
Round edge



45° chamfering

Plastic Pedestal









2CM





## TECHNICAL DATA




 Thickness	20mm
 Water Absorption	Less than 0.5%
 Breaking Strength	≥10200N
 Modulus of Rupture	Minimum ≥35N/mm <sup>2</sup>
 Static Coefficient of Friction	Dry: 0.87, Wet: 0.73
 DCOF	0.52
 PEI	Class 4
 Slipperiness	R11

## PARAMETERS

### PACKING INFO

 Ctn size	600×600×20mm	1200×600×20mm
 Pcs/Ctn	2	1
 M <sup>2</sup> /Ctn	0.72	0.72
 Kg/Ctn	34	34

 Pallet size	1.1×1.1m	1.1×1.1m
 Ctn/Pal	40	31
 M <sup>2</sup> /Pal	28.8	22.32
 Kg/Pal	1360	1054

 Ctn/Cont	800	775
 Pcs/Cont	576	558
 Kg/Cont	27000	26350